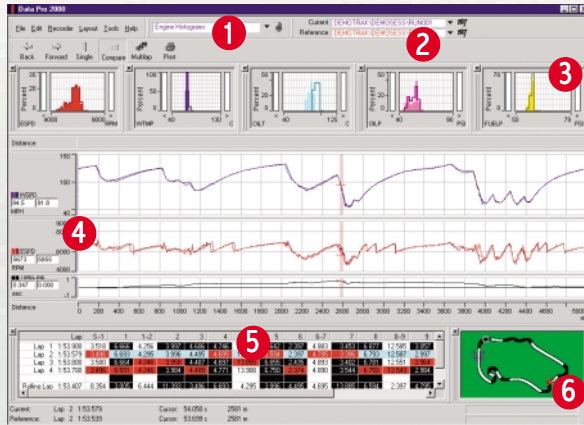


# DATA PRO SOFTWARE

## OVERVIEW

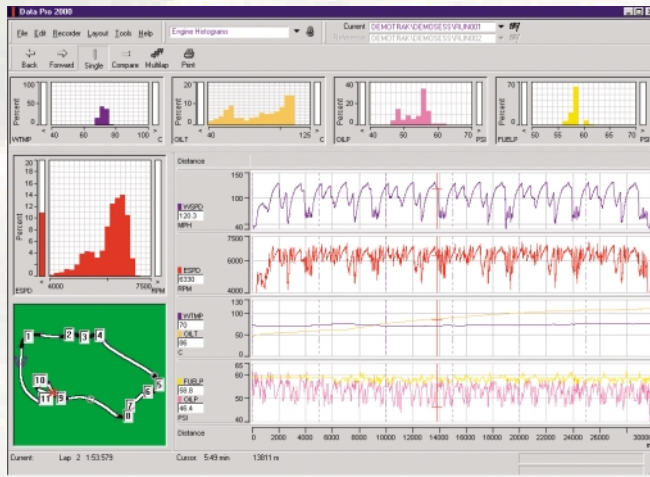


- 1 Layout Selector
- 2 Run Selector
- 3 Histograms
- 4 Charts
- 5 Reports
- 6 Track Maps

We believe that DataPro is the easiest to use professional data analysis software available at any price!

- Optimised for use on lap top computers
- All functions accessed through a single screen - i.e. Configuration, Download, Data Selection, Analysis
- All routine functions can be accessed using only the keyboard keys
- Unique dockable panes ensure that no data is hidden
- Fully customisable user configurable layouts
- Predefined layouts are provided to help the novice user
- Flexible zoom level allows the user to view the complete run, a lap or any part of the run or lap
- Full 32 bit colour video graphics
- Fast loading and display of data
- Windows 98 & ME compatible (download and analysis)
- Windows 2000 compatible (analysis functions only)

## ENGINE ANALYSIS



- Engine parameter Histograms allow the user to simply and quickly check that the engine is operating within desired operating limits.
- If the engine is operating outside normal limits the Charts can be used to analyse the run in more detail.  
For example, Charts can show mechanical problems, such as a bearing starting to fail during a run, or a set up error such as running too much radiator that overcools the engine.
- The RPM Histogram can also show how the driver is using the engine. For example it is easy to see if the driver keeps the engine in its power band, and if the driver is losing performance by consistently shifting gear too early or too late

## DRIVER AND VEHICLE SET UP ANALYSIS

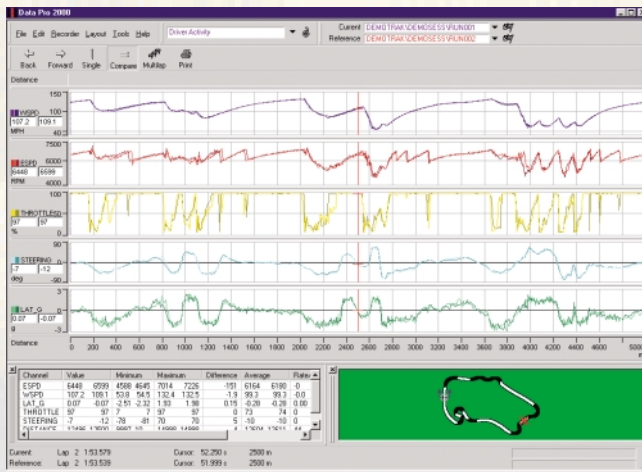


- 3 Rolling Lap Time Chart  
This Chart can be used for assessing driver consistency and establishing the true potential lap time on a crowded track- where for example fast laps have been spoilt by traffic.

DataPro is supplied with standard analysis features designed specifically for comparing data from different drivers, vehicle set ups and driving techniques.

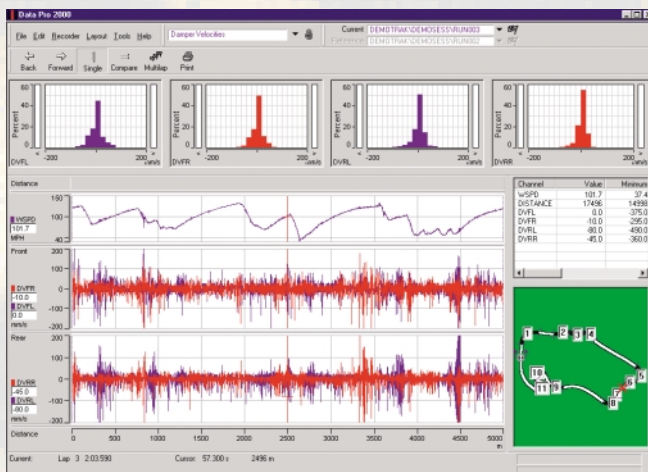
- 1 Segmented Lap Report  
This tabular report shows and compares individual segment times and speeds for any two laps. This report allows the user to quickly identify through which segments a vehicle set up - or driver - is faster or slower.
- 2 Timeline Chart  
This Chart allows the user to select any two runs and compare the time difference between individual laps or any selected section.  
Time is zeroed at the start of the selected section and the graph plots the relative time difference between the two sets of data - allowing the user to see exactly where time has been gained or lost.

## ADVANCED DRIVER ANALYSIS



- By recording driver control parameters, such as throttle, steering and brake position, Charts allow the user to accurately compare driver technique and identify the reasons why one driver is faster than another.
- DataPro provides a **Normalised Lap** function that ensures data from laps driven using varying lines are accurately aligned against track position.
- A **Beacon Alignment** feature allows the user to align, and accurately overlay runs, with different beacon positions.
- A **Multiple-Lap Overlay** feature is provided to allow selected laps to be overlaid simultaneously against a reference lap.

## ADVANCED VEHICLE SET UP ANALYSIS



- The highly flexible Histogram compare facility enables quick and effective pinpointing of differences between vehicle set ups.
- Charts allow the user to see exactly what the vehicle is doing all around the circuit, and allows expert users to decide what specific adjustments should be made to the vehicle
- DataPro includes a **Maths Package** that calculates parameters such as Damper Velocity, Vehicle Pitch & Roll and Ride Height
- The **Infinite Zoom-in** capability of DataPro allows the user to zoom into any area of the run, down to individual data points if required.

## SUMMARY OF FEATURES

- Pre-configured layouts to help novice users
- Fully customisable and user configurable Layouts
- Layout Manager allows Layouts to be grouped together for different tasks and users
- Docking Panes feature means that a data analysis pane is never hidden
- Lap Normalisation ensures all laps overlay accurately for data comparison
- Toggle between Distance and Time base Charting
- Overlay Chart data from different, or same, run
- Show data value at cursor position on the Chart
- Timeline and Corner Radius Charts
- Rolling Lap Time Chart and Report
- Histogram panes with compare facility
- Segmented Lap, Run and Statistics Reports
- Infinite zoom-in into any section of data
- Track Map shows the actual track position relating to the cursor position on the Charts
- When zoomed-in to section of a lap the area under analysis is highlighted on the Track Map
- Zoom level can be set through Chart or Track Map
- Simultaneous update of all panes when zoom level or highlighted area of chart or map is changed
- Beacon Alignment allows runs with different beacon locations to be accurately aligned
- Run Marker editor allows missing lap times to be entered into the data
- Run Notes record important notes concerning the run
- Calculation of Track Maps from recorded vehicle data
- Maths package to derive additional parameters from recorded data
- Multiple Vehicle support automatically downloads data into individual vehicle specific data directories
- Print using any Windows compatible printer
- Allows data to be shared between users
- Run Manager for data archiving, backup, moving and copying of files between directories and PC's

STACK  
STACK  
STACK

DATA PRO SOFTWARE